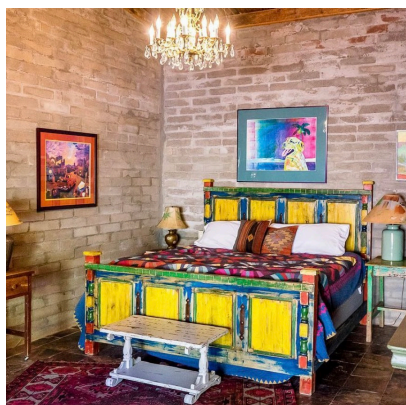
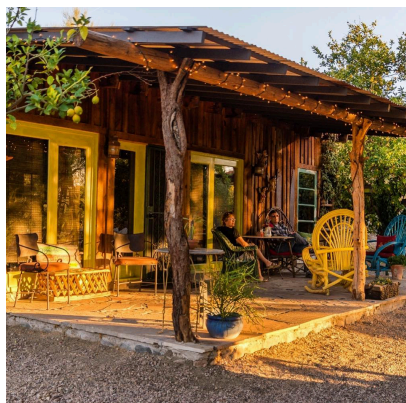




TED NUTTALL • ARAVAIPA FARM ORCHARD INN • WORKSHOP RETREAT



Aravaipa Farms is one of Ted's favorite places to visit and work, as well as an extraordinary venue for a workshop. Besides it's location being a little slice of paradise, it is designed to accommodate only a small group of people - the group will not exceed more than ten students - which allows for much more one-on-one interaction between Ted and each participant.

As always, his workshops are designed to make painting the figure or portrait as approachable as creating a still life or landscape; to provide the tools, the confidence and the inspiration to enjoy painting people.

More than that, Ted's classes are as much about general creative awareness, as they are about the fundamentals of using color, composition and light in your work, as well as a smattering of art history and some insights into what's current in the art world today.

WORKSHOP SCHEDULE

SAT, Mar. 29 : 7:30 - Gather in the evening for a meet and greet

SUN, Mar. 30 : 9:00-3:00 - Studio Time - Breakfast, lunch and dinner provided

MON, Mar. 31 : 9:00-3:00 - Studio Time - Breakfast, lunch and dinner provided

TUES, Apr. 1 : 9:00-3:00 - Studio Time - Breakfast, lunch and dinner provided

WED, Apr. 2 : 9:00-3:00 - Studio Time - Breakfast, lunch and dinner provided

THU, Apr. 3 : 9:00-11:00 - Video Lecture - Breakfast provided - Check-out 11:00

WORKSHOP FEES

The fees for the Aravaipa Farms Painting Retreat (which includes lodging for 5-nights, meals, and the workshop fee) are as follows:

- Orchard Casita \$2889.
- Treehouse Casita \$3015.
- Garden Casita \$2950.
- Mountain View Casita. \$2828.
- Blue Door Casita. \$2642.
- Farmhouse, Master \$2639.
- Farmhouse, Bedroom 1 (shared bathroom) \$2339.
- Farmhouse, Bedroom 2 (shared bathroom)\$2339.

Non-painter participant fee. \$650.

Non-painter participants may share a participant's room, enjoy the provided meals, even sit in on Ted's lectures should they choose. The only restriction is that they cannot paint or receive one-on-one instruction from Ted.

A 50% deposit is required to confirm and reserve your space in the workshop. The remaining balance is due 30 days prior to the workshop.

Contact Chris Nuttall for reservations: chris@tednuttall.com / 480-518-0754

Cancellation Policy:

- More than 60 days prior to the workshop - deposits are refundable.
- After 60 days prior to the workshop - deposits are non-refundable.
- After 30 days prior to the workshop - fees are non-refundable.

Visit aravaipafarms.com for more venue information.

Additional nights, before or after the workshop, can be arranged by contacting Aravaipa Farms directly – 520-261-7373.